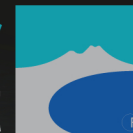


V1.0



vulcanair
aircraft



AIRCRAFT DIMENSIONS

Overall Height
9 ft 1 in (2.77 m)
Overall Length
23 ft 9 in (7.23 m)
Wingspan
32 ft 10 in (10.00 m)
Maximum Seating Capacity 4
Baggage Capacity
88 lb (40 kg)

DESIGN WEIGHTS & CAPABILITIES

Maximum Takeoff Weight
2546 lb (1155 kg)
Typically Equipped Empty Weight
1664 lb (755 kg)
Maximum Useful Load
882 lb (400kg)
Usable Fuel Capacity
50 gal (190 l)

PERFORMANCE

Maximum Cruise Speed
135 kts (250 km/hr)
Range
(3 persons of 77 kg., 45-min reserve,
45% power, 10000 ft)
550 nm (1019 km)
Rate of Climb at Sea Level
730 ft/min (222 m/min)
Service Ceiling
14700 ft (4500 m)
Takeoff Distance to 50 ft
1440 ft (439 m)
Landing Distance (over 50-ft obstacle)
1650 ft (480 m)
"Short field" Landing Distance
1400ft (427 m)

POWERPLANT

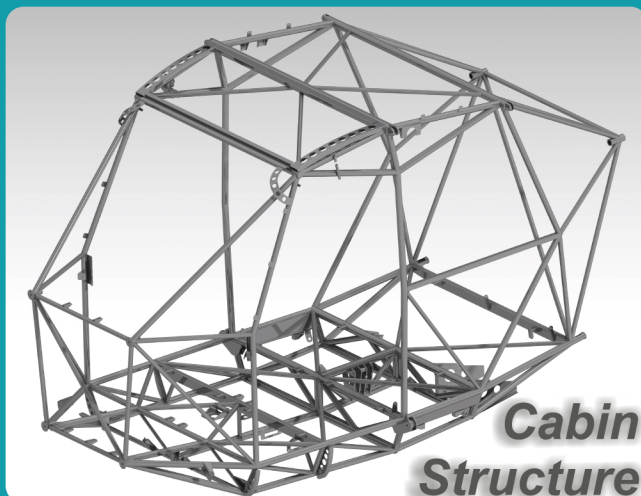
Engine
Lycoming IO-360-M1A
Horsepower
180 hp
Propeller
Two-Bladed Constant Speed Propeller
TBO
2,000 hours

Meet the V1.0! The new certified single-engine aircraft by Vulcanair.

Built tough with quality materials; metal vs. plastic, durable versus expendable, in line with Vulcanair's design philosophy: durability safety and exceptional value.

With the V1.0, Vulcanair leverages its long experience in designing and manufacturing more complex multi-engine aircraft and aims to the popular single-engine piston market. Excellent aircraft performance, state-of-the-art manufacturing techniques, with metal durable construction, modern avionics and exceptional value in terms of acquisition costs make the V1.0 a serious alternative in today's piston single engine aircraft arena.

The V1.0's structure is a combination of welded steel tubes arranged in an articulate reticular fashion (main cabin) coupled with a riveted aluminum wing, tail cone and empennage sections. This arrangement insures a strong protective cabin for pilot and passengers and a lightweight structure altogether.



The V1.0 is powered by the 180 hp Lycoming IO-360-M1A that is capable of running with AvGas or alternative fuels. To satisfy the owner's profile, the aircraft is offered with a choice of a fixed pitch propeller or a constant pitch propeller (optional).

The aircraft cabin is extremely functional with four seats and three doors and a luggage capacity of 40 kg (88lb) in a separate and dedicated compartment.

The aircraft cockpit has been designed to keep all the commands and switches and circuit breakers in an ergonomic position for the pilot and its shape has been designed to minimize parallax errors.

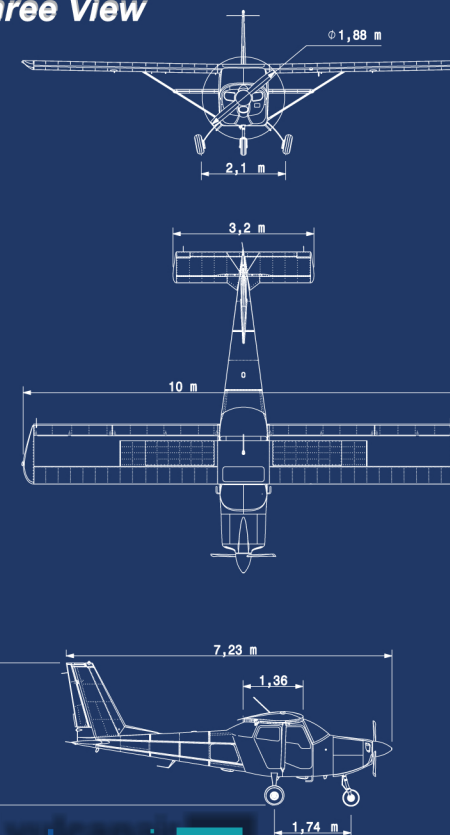
The standard avionics package of choice features a Garmin G500 coupled with a GTN650 unit and a JPI digital engine monitoring system. Mid Continent's latest digital back-up digital instrument (SAM) is offered standard in the aircraft package as well as an AoA (angle of attack indicator). An optional full IFR version is also available.

Among the characteristics of the V1.0 there is the aircraft semi-aerobatic classification, which further expands the V1.0 training and utility ambitions.



Vulcanair S.p.A.
Via G. Pascoli, 7 - 80026 Casoria (NA) - Italia
Tel: +39 0815918111 - Fax: +390815918172
e-mail: sales@vulcanair.com - www.vulcanair.com

Three View



vulcanair
aircraft